



**MAGNI**  
TELESCOPIC HANDLERS

Maximum lifting height: 29,90 m

Maximum reach: 25,85 m

Engine: JCB ECOMAX 129 KW - 175 HP

Electronically controlled hydrostatic transmission

Automatic levelling device

Scissor type stabilizers

**RTH5.30**

# Full visibility cab MAGNI patented design



Pressurized cab  
ISO 10.263

Standard air conditioning  
and heating

Touch screen  
display with joystick  
control system

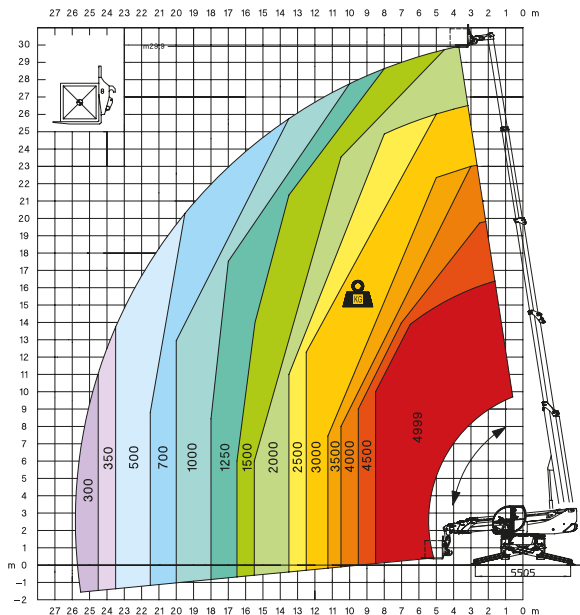
From the left:

- Travelling mode screen
- Stabilizers control screen
- Load Moment Indicator screen
- Air conditioning management screen
- Customization screen

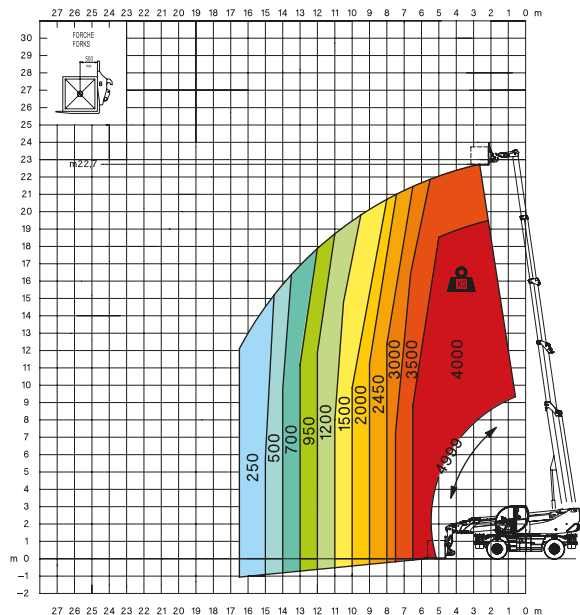




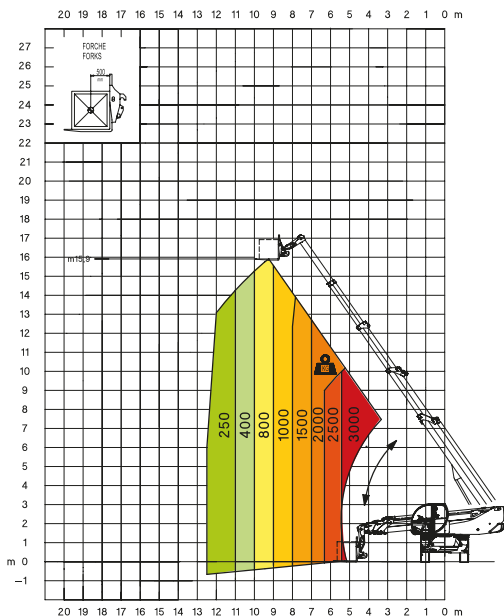
360° fully extended stabilizers load chart with forks



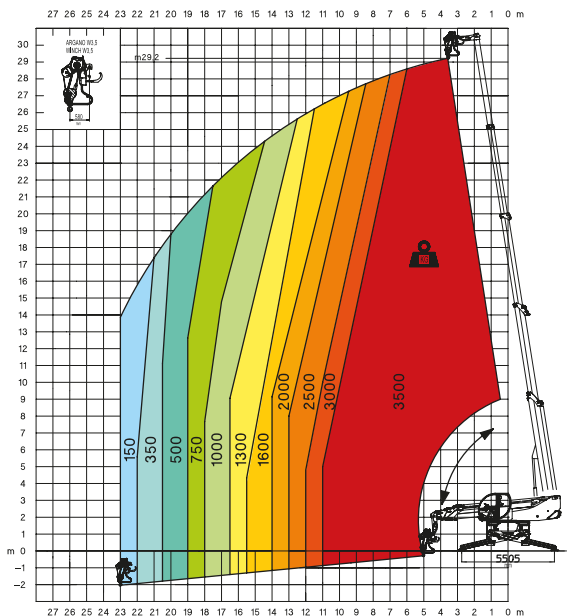
Frontal position load chart on tyres with forks



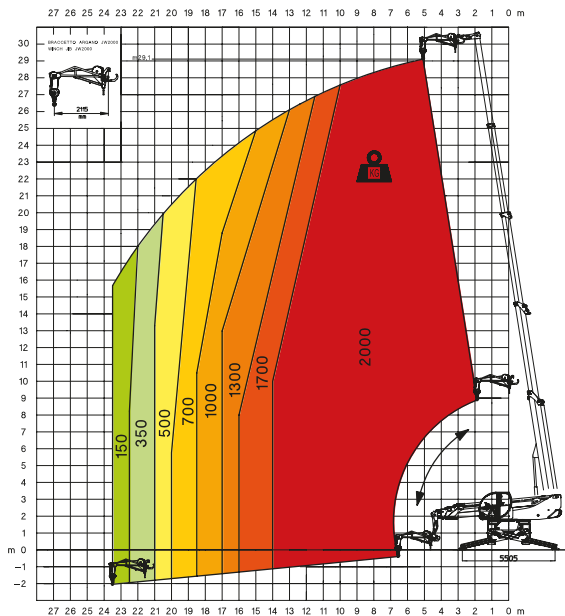
360° load chart on tyres with forks



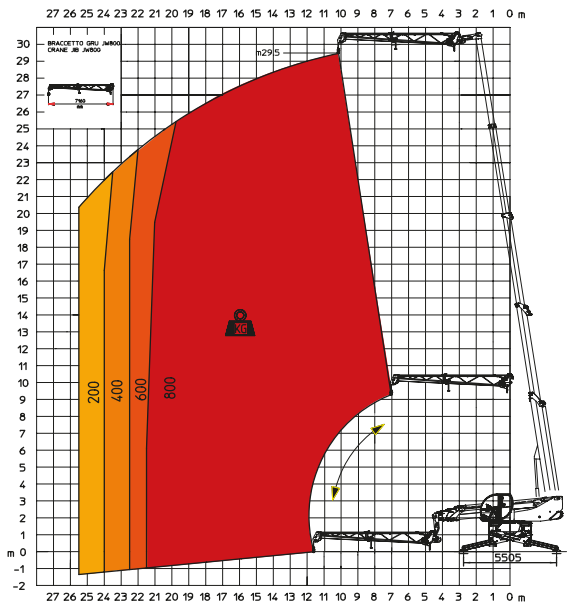
Winch W 3,5



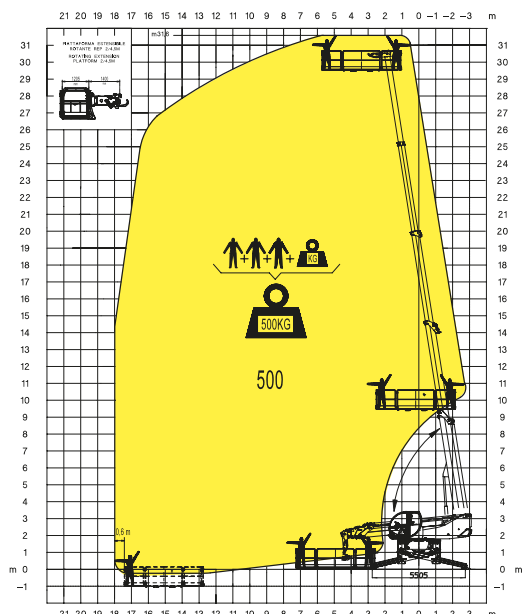
Jib with winch JW 2000



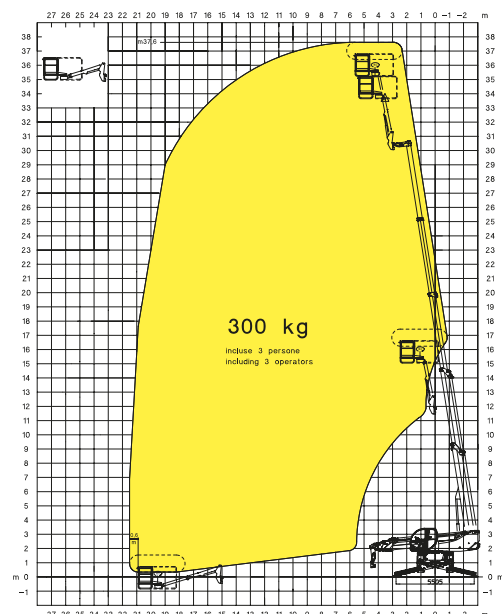
JW 800



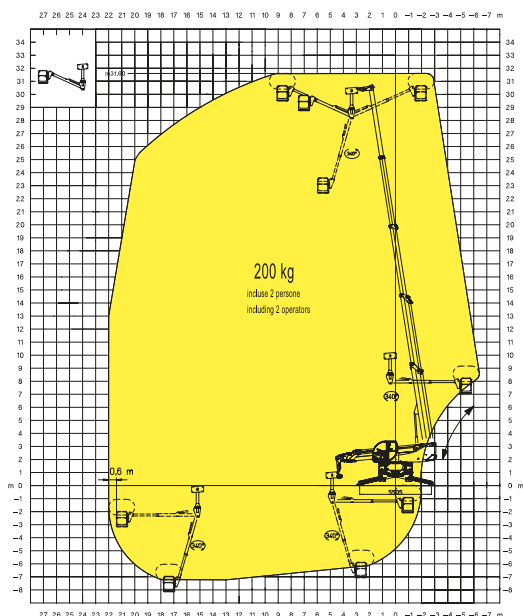
## Extendable rotating platform REP 2/5



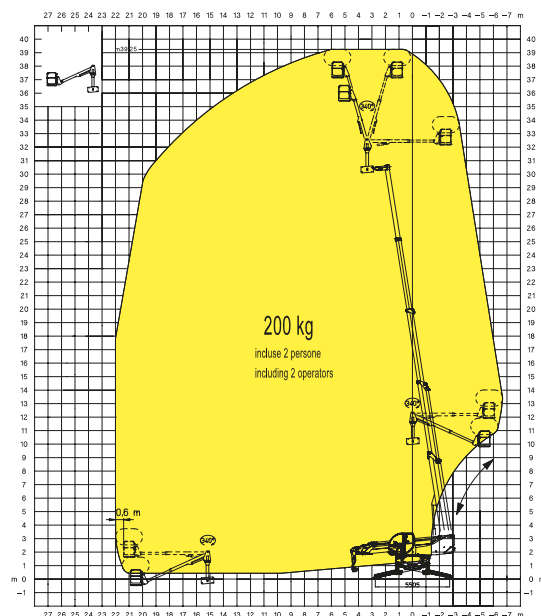
## Telescopic jib platform TP



## Positive-negative telescopic platform TP O-U



## Positive-negative telescopic platform TP O-U

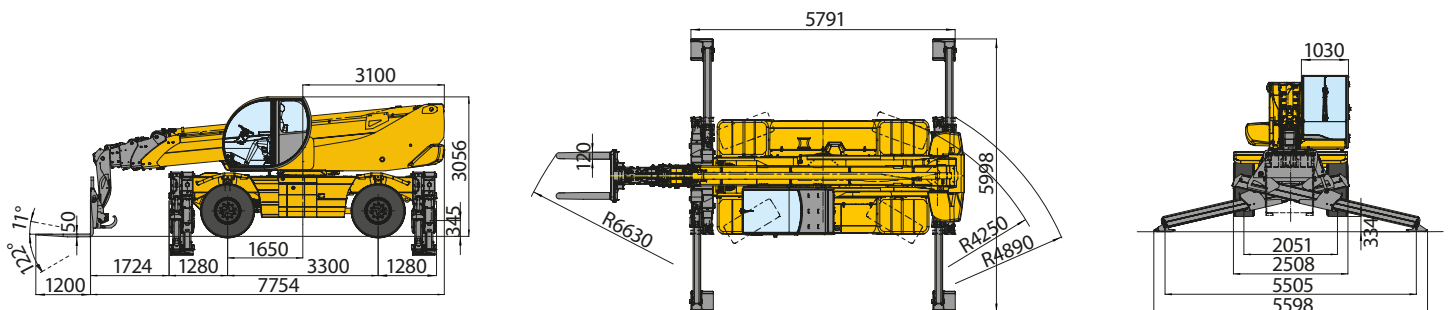


- A 3 in 1 machine:
- Telescopic handler
  - Hydraulic crane
  - Access platform

- Safety device to prevent unhooking of the attachment (MAGNI patent)
- Attachments automatic recognition system RFID



MACHINE MODEL	Rotating telescopic handler	RTH 5.30	
	Maximum lifting capacity	4.999 kg (center of gravity 500 mm)	
	Maximum lifting height	29,90 m	
ENGINE	Type	JCB ECOMAX 448-TA 4i tier 4 interim	JCB DIESELMAX 444 - EURO 3A
	Rated power	129 KW - 175 HP at 2.200 rpm	120 KW - 162 HP at 2.200 rpm
	Maximum torque	657 Nm at 1.500 rpm	657 Nm at 1.500 rpm
	Displacement	4,8 l	4,4 l
	Cylinders	4 in line	4 in line
	Fuel	Diesel direct injection turbocharged	Diesel direct injection turbocharged
	Cooling system	Water – intercooler	Water – intercooler
TRANSMISSION	Type	Hydrostatic	
	Model	Bosch – Rexroth	
	Maximum pressure	500 bar	
	Displacements	Variable displacement pump (displacement max 110 cc/r) electronically controlled Variable displacement motor (displacement max 115,6 cc/r)	
	Gear box	2 speeds (4,06-1,43) forward-reverse	
AXLES AND BRAKES	Total ratio	17,5 on each axle	
	Rear axle	Oscillating and steering with hydraulic locking	
	Front axle	Oscillating and steering with automatic levelling +/- 10°	
	Service brake	Hydraulically activated, oil-immersed multi-disc type on each axle	
	Parking brake	Hydraulic with negative action	
	Tyres dimensions	18 x 22,5	
PERFORMANCE	Max. travel speed	40 km/h	
	Drawbar pull	97 kN	
	Gradeability	41%	
	Turning radius (end of forks)	6,63 m	
WEIGHTS	Total unladen	21.060 kg	
	Front axle unladen (boom retracted and lowered)	10.350 kg	
	Rear axle unladen (boom retracted and lowered)	10.710 kg	
TANKS CAPACITIES	Fuel tank	200 l	200 l
	Hydraulic oil tank	210 l	210 l
	Engine oil tank	16 l	16 l
	Cooling liquid	23 l	23 l
HYDRAULIC CIRCUIT	Max. operating system pressure	350 bar	
	Circuit type	Load sensing	
	Service pump	Bosch Rexroth – Variable displacement (max displacement 58,5 cc/r) – Flow rate 130 l/min	
	Controls for boom and turret movements	Sauer Danfoss – Electroproportional valve SIL 2	
	Controls for stabilizers	Bosch Rexroth – Electro-hydraulics controls	
	Movements control	2 joystick Sauer Danfoss with two shafts with dead man safety device Management with CAN bus technology	
DIMENSIONS	Max. length (boom retracted and lowered)	7.754 mm (at vertical point of forks foothold)	
	Max. width	2.508 mm (on wheels)	
	Max. height (boom retracted and lowered)	3.056 mm (on wheels)	
	Wheel base	3.300 mm	
	Ground clearance	345 mm	
CONFORMTY TO STANDARDS	EN 13849: concerning the safety of all controls of the machine EN 13000: concerning the standard of hydraulic cranes EN 280: concerning the standard of aerial platforms EN 15000: concerning the dynamic stability of the telescopic forklift FOPS/ROPS 97/68/CE: concerning engine emissions standards		





**Magni Telescopic Handlers srl**

Via Magellano, 22 - 41013 Castelfranco Emilia, Modena, Italia

Tel: +39 059 8630811 - Fax: +39 059 8638012

commerciale@magnith.com - [www.magnith.com](http://www.magnith.com)

The data in this brochure are informative and subject to change without notice