



S.A. **TRAMAC BENELUX** N.V.

Avenue de l'Energie 11, B - 4432 Alleur
Tel.: +32 4 263 99 84 Fax: +32 4 263 99 85
Mail: tramac@tramac.be www.tramac.be



ROCKWHEEL

WORKBOOK



CONTENT

Get unrivalled results with a Rockwheel cutting unit: does the work effectively which leaves you with fine crushed material.

page: 4 - 5

ABOUT US

page: 6

APPLICATIONS

page: 7

ADVANTAGES

page: 8 - 9

DEMOLITION



page: 10 - 11

TRENCH &
PIPELINE
CONSTRUCTION



Seite: 12 - 13

EXCAVATION
FOUNDATIONS



page: 14 - 15

PROFILING
& SMOOTHING



page: 16- 17

MINING



page: 18 - 19

UNDER WATER



page: 20 - 21

TUNNELING



page: 22 - 23

ASPAHLT



page 24 - 25

STEEL MILLS



page: 26 - 27

LANDSCAPING



page: 28 - 29

SOIL MIXING



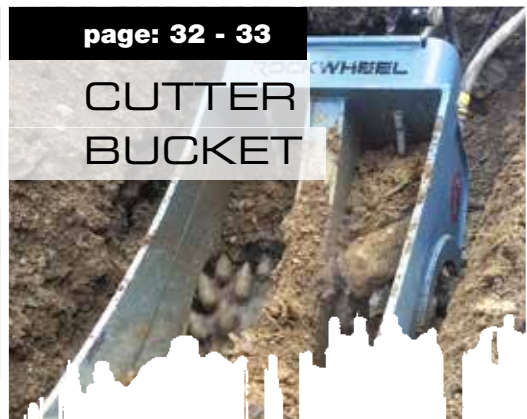
page: 30 - 31

360° WORK



page: 32 - 33

CUTTER
BUCKET



page: 34 - 37

OUR PRODUCT RANGE

page: 38 - 41

THE FACTS AND FIGURES

page: 42 - 43

DRUMS AND PICKS



ABOUT US ROCKWHEEL®

Let's get ready to rock.

WE BUILD CUTTING UNITS TO IMPRESS!

The secret? Sophisticated engineering and unparalleled quality! Rockwheel cutting units combine British creativity and decades of cutting unit production experience with the "Made in Germany" seal of quality.

CUTTING UNITS GET THE JOB DONE WHERE BUCKETS FAIL!

Rockwheel cutting units are perfect for applications where a bucket would be too weak and a hammer would be excessive.

WE DELIVER THE PERFECT MATCHES

Rockwheel cutting units are available for carriers with an operating weight of up to 125 tonnes, making them ideal for use with mini excavators and heavy equipment.



ROBERT PIASECKI Managing Director

With more than 20 years of experience in the construction equipment industry, a feel for intuitive solutions and extensive technical expertise, Robert Piasecki is able to provide customers with invaluable support and knowledge.

IAN WEBSTER Head of Engineering

Ian Webster invented hydraulic cutting units over 25 years ago and is continuously working on new technologies and applications. His innovations are without parallel in the entire world and can be found in Rockwheel cutting units.

KLAUS VOLKERT Managing Director

With 30 years of experience in the construction equipment industry and excellent business know-how, Klaus Volkert knows just how to implement smooth operations and new strategies.



ADVANTAGES[®]

Perfect. Everywhere.

EXTENSIVE RANGE[®]

Extensive range of applications for Rockwheel cutting units.

MOTOR PROTECTION

Valve technology protects the hydraulic motor

RUNS WITHIN HAMMER CIRCUIT

Only two hydraulic connections – no case drain line required

SILENT OPERATION

Perfect for noise sensitive areas

LONGEST EXPERIENCE ON THE MARKET

Developed by Webster Technologies

REUSABLE CRUSHED MATERIAL

Crushed material with a diameter of 3 cm

GEAR RATIO

Geared cutting units with a gear ratio of up to 2:1 for maximum torque - invented and unrivalled

OPTIMAL PICK LACING

Maximum performance and smooth operations

SHORT DESIGN

Optimized transmission of power from the excavator to the Rockwheel

OPTIMIZED POWER-TO-WEIGHT RATIO

Enhanced performance achieved with less weight

EXTREMELY HEAVY-DUTY

For the toughest jobs

LOWER VIBRATIONS

For cutting in sensitive and urban locations without transmitting vibrations to the surroundings

STRENGTH OF MATERIALS (MPA)



soft material
(up to 10)



medium to hard material
(10 to 100)



hard material
(100 to 200)



extremely hard material
(over 200)



DEMOLITION

Resistance is futile.

DEMOLISH AND CUT - IN A SINGLE STEP

Unrivalled performance enables Rockwheel cutting units to effortlessly crush concrete – including steel reinforcement.

No additional tools are required in order to cut rebar.
Result of crushed material is as the same size as gravel, making its removal easier and efficient.

LOWER NOISE LEVEL FOR USE IN SENSITIVE AREAS

Demolition with cutting units is a lower noise activity! This is important when working in sensitive locations, such as urban and residential areas.

Moreover, the usage of cutting units makes lower vibration as it eliminates the typical impact energy of breakers.

BUILD TO DEMOLISH

With their massiv full-length Hardox[®] central protective plates, reinforced housing and carbide-tipped picks, heavy-duty Rockwheel cutting units are almost unbreakable.



THAT ROCKS

- Lower vibration minimizes machine wear and environmental impact
- Cuts rebar and flat bar
- Perfect for noise-sensitive locations
- Reusable crushed material (gravel-sized)
- Crushed material can be easily removed
- Rugged steel structure with Hardox reinforcements
- Can be used for removal in layers
- Faster than hammers on similar materials
- No case drain line required
- Mounted spray nozzle ensures dust-free work



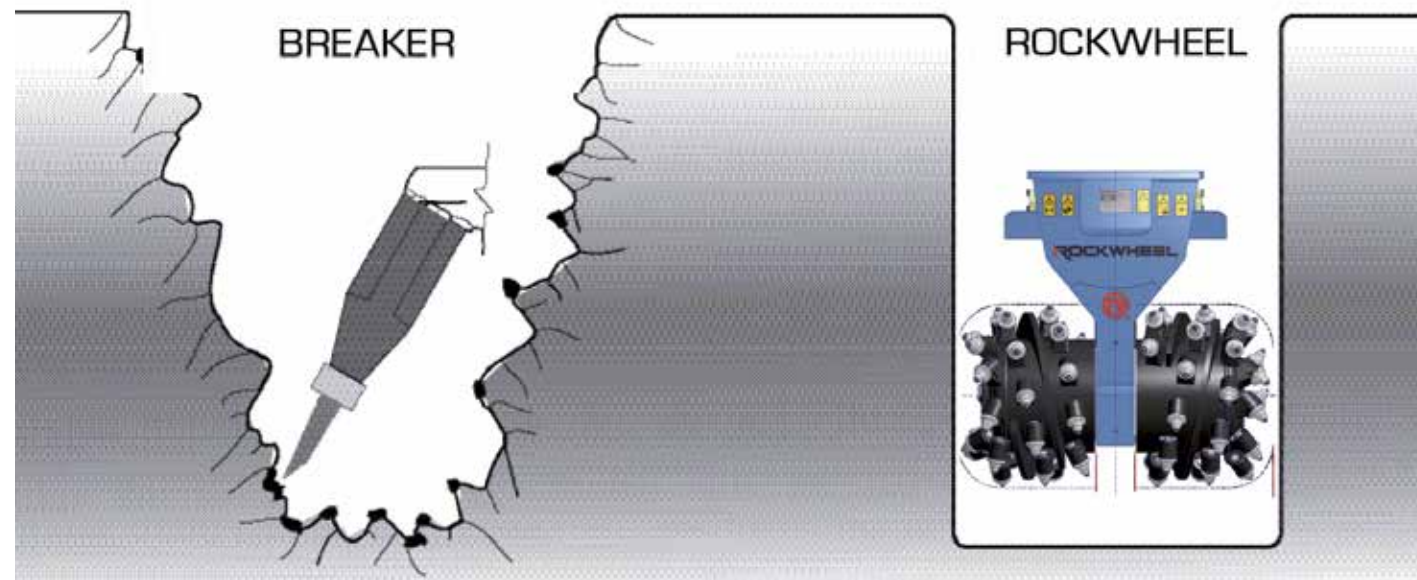
ACTION HERO



EXCAVATION TRENCH & PIPELINE



Cutting is the key for the perfect trench.



WORKING WITH BREAKERS:

In contrast, hammers produce irregular walls and require a funnel shape as a trench's depth increases.

Not only that, but the chipping that results from hammering can unintentionally widen trenches.

Rockwheels eliminate these problems.

HIGH-PRECISION TRENCHES IN RECORD TIME

The only way to achieve consistently smooth and vertical trench walls is by grinding. In fact, Rockwheel cutting units always cut rock material at their exact drum width regardless of depth, ensuring that trenches always have the planned width.



ROCKWHEEL TRENCH AND AXIAL CUTTERS

Rockwheel trench cutters are the ideal choice for very narrow trenches. Featuring only one rotary drum, they are able to excavate this type of trench, and the integrated stabilizing wheel helps relieve the load on the excavator slewing ring.

Meanwhile, Rockwheel axial cutters are the right choice when it comes to vertical holes in the ground, and also featuring only one rotary cutter in order to ensure that the end result is a perfect hole.

THAT ROCKS



- Drum width = Trench width
- Three to five times faster than hammers when working on medium hard type of rock
- Reusable ground material (diameter of 1 – 3 cm)
- Consistently smooth and stable trench walls
- Up to 50% less excavation volume
- Extremely powerful and precise
- most robust design on the market
- Lower vibration and lower noise
- Can be used in sensitive locations such as urban and residential areas



EXCAVATION FOUNDATIONS®

Turn to cutting when your bucket reaches limits!

EFFICIENT IN MEDIUM TO HARD MATERIAL

Between the bucket and the hammer: there's where you will find the cutting unit. This means that Rockwheels are designed to deliver unrivalled results. In fact, they are the ideal solution for excavation projects.

Also, with their cutter drums Rockwheels cut through material and pulverize it three to five times faster than a hammer. Moreover, the resulting gravel-sized material is more manageable and can be removed in a more cost-effective manner.

PERFECT FOR NOISE-SENSITIVE AREAS

Rockwheel cutting units are the ideal choice when it comes to problematic projects, such as cities or in urban areas. In addition, the cutting units feature a lower vibration design, as they won't have any impact on adjacent buildings.



THAT ROCKS



- The most efficient attachment for medium rock
- Three to five times faster than hammers
- In scenarios where a bucket is reduced to nothing but scratching, a cutting unit can cut through the material effortlessly
- Gravel-sized cutted material
- Easy removal
- Lower vibration and lower noise



PROFILING & SMOOTHING®

Precision meets effectiveness.

PRECISION MEETS EFFECTIVENESS

Some jobs require a combination of precision and power and this definitely applies to profiling and smoothing work. This is where Rockwheels come in: not only do they guarantee impressive power, but they deliver perfectly steady and consistent work thanks to a perfectly fine-tuned pick lacing.

When restoring sensitive concrete structures such as foundations and bridge piers, Rockwheel cutting units work with levels of precision that no other attachment can match.

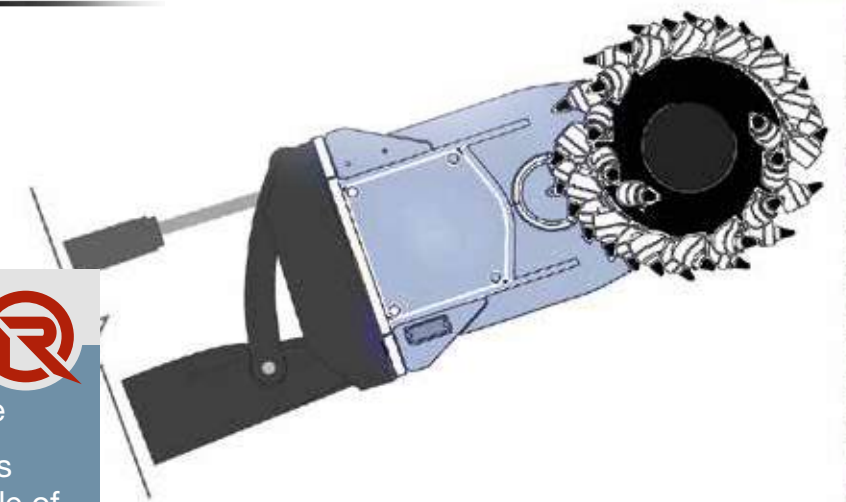
In fact, a Rockwheel is the right choice even when it comes to challenging work such as smoothing the walls or blocks.

It also makes the operation fatigue-free, which is an important advantage.



THAT ROCKS®

- Powerful and precise
- Prevents microcracks
Shallow profiling angle of less than 45 degrees
- Steady and smooth work achieved with an optimized pick lacing



shattered / rough material

smooth wall
accurate cut

undisturbed material

SMOOTH OPERATOR



MINING

3 times greater.

OPTIMAL CUTTING PERFORMANCE FOR MINING

The extremely short Rockwheels, combined with their sturdy and indestructible housing, are guaranteed to make quick work of the rock being removed. Moreover, they leave projections clearly visible and easy to work on immediately as opposed to ripper teeth, which break up large pieces of rock and make work difficult for excavator operators.

When removed material is internally processed as aggregate, Rockwheels kill two birds with one stone. This stands in sharp contrast to hammers, which produce larger pieces of rock.

Working with Rockwheel units is far less strenuous and exhausting for excavator operators when compared to the bone-breaking blows produced when using ripper teeth. In fact, these units not only go gentle on operators, but also on the excavators themselves by reducing the mechanical load to which the latter are subjected.



THAT ROCKS

- Two to three times better removal performance
- Lower vibration work
Projections can be cut simultaneously
- Special picks for abrasive material available
- Sandy brine water is not an issue
- Removal performance depends on rock hardness, toughness, and hard-wearing materials
- Smaller excavated material



RUNNING SYSTEM

UNDERWATER

True workhorses.

RELIABLE UNDERWATER POWER WITHOUT THE NEED FOR ALTERATIONS

Rockwheels are true workhorses when it comes to work in shallow and deeper waters. Whether it involves foundation work, trench construction, lowering the water table, or other tasks, Rockwheels are the safest and most effective and reliable choice for underwater jobs.

And unlike hammers, which require extensive alterations, Rockwheels can be used underwater at any time and instantly. In fact, Rockwheel cutting units will continue to work reliably and efficiently without any alterations and therefore they are the perfect choice for soft to hard materials either above or below water.

As for underwater work with poor visibility, a GPS positioning system for the excavator and the cutting unit can be invaluable. Moreover, divers can monitor underwater work safely.



THAT ROCKS!

- Underwater reliability without the need for alterations
- Same areas of application as above water
- Every fourth or fifth cutting unit job is an underwater project
- Every single underwater specialist owns a cutting unit
- Extreme depths of over 2,000 m are possible



HYDROPOWER



TUNNELING®

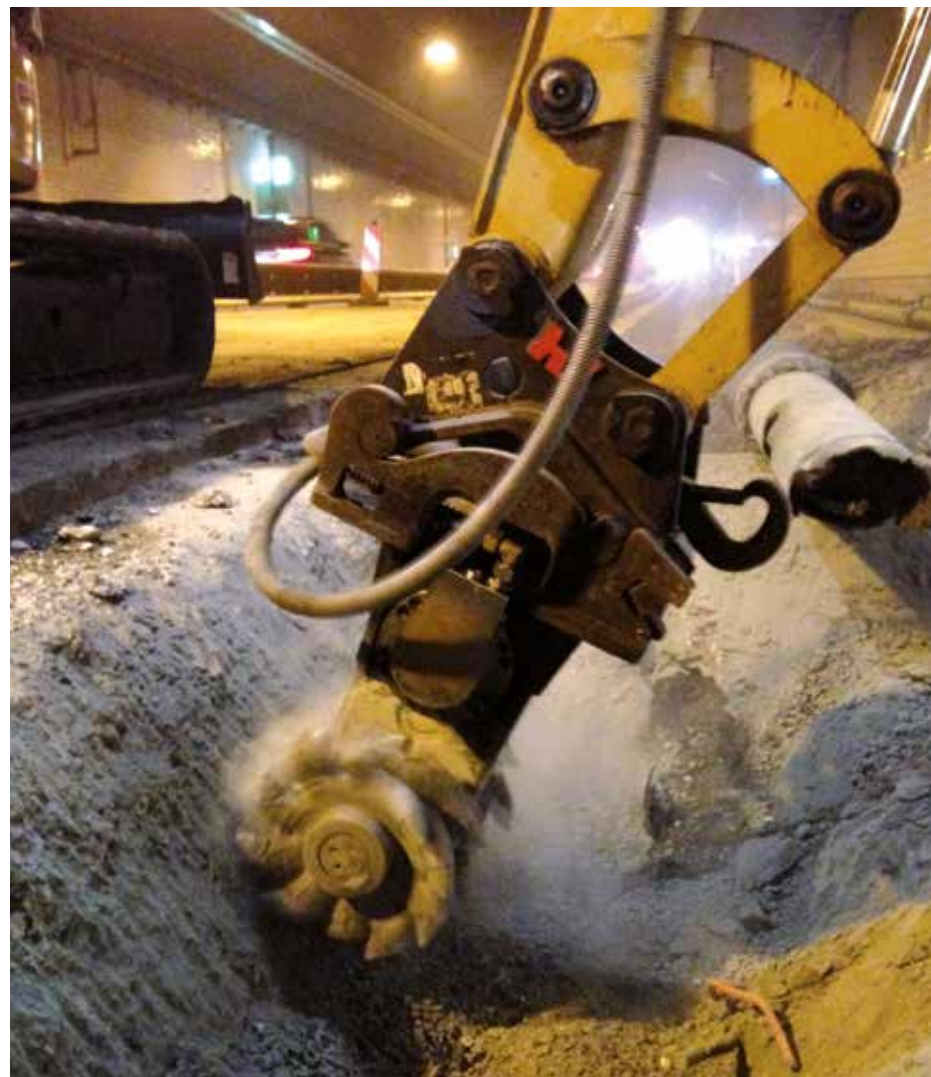
More precision. More speed.
More efficiency.

EVERY TUNNEL USES A ROCKWHEEL

Tunnel construction not only requires precise and powerful work, it's crucial that cracks are prevented. This is where low-vibration cutting can prove to be invaluable, as it prevents the production of dangerous cracks and undesirable vibrations.

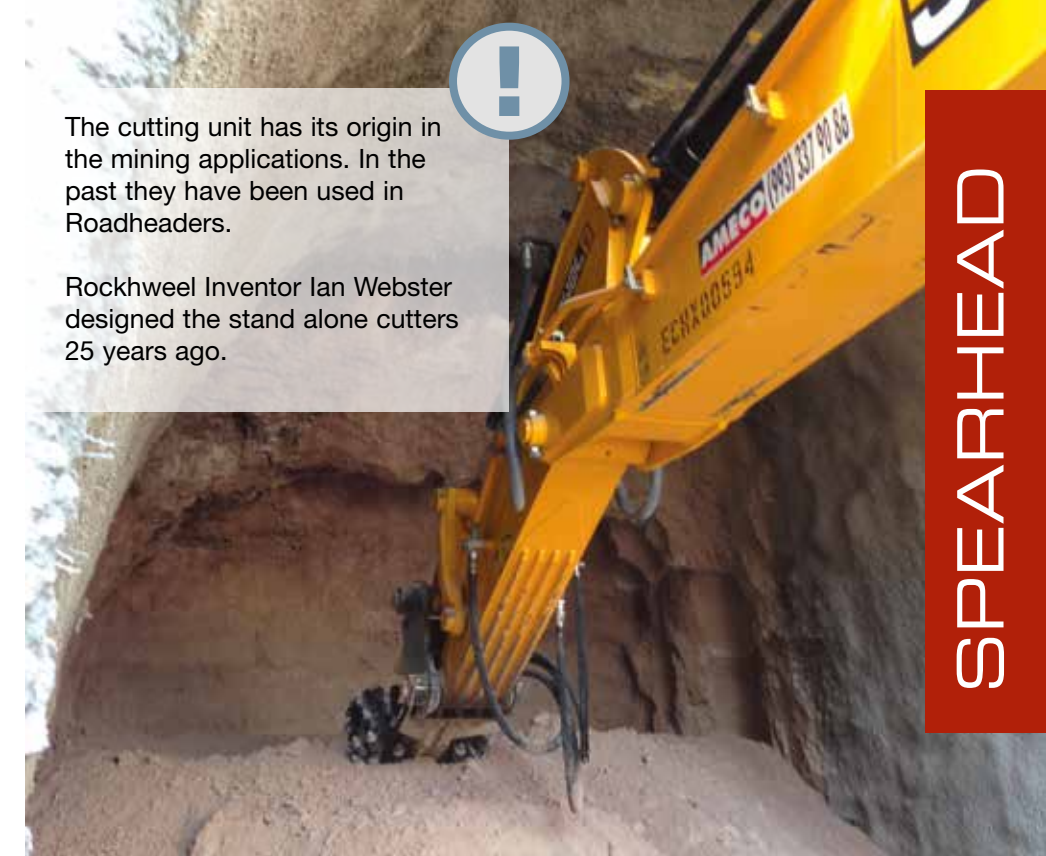
Rockwheel cutting units shape tunnels, remove projections, and when used with a rotator, have an operating radius of 360°. Moreover, they have a mounted water spray nozzle that can be used to directly suppress dust. Finally, the cut material has the size of gravel, making it easy to remove from the tunnel site.

Whether a tunnel will be used for rail, road vehicles, watercraft, pedestrians, pipes, or power cables, Rockwheel cutting units are the perfect choice thanks to their combination of precision and efficiency.



The cutting unit has its origin in the mining applications. In the past they have been used in Roadheaders.

Rockwheel Inventor Ian Webster designed the stand alone cutters 25 years ago.

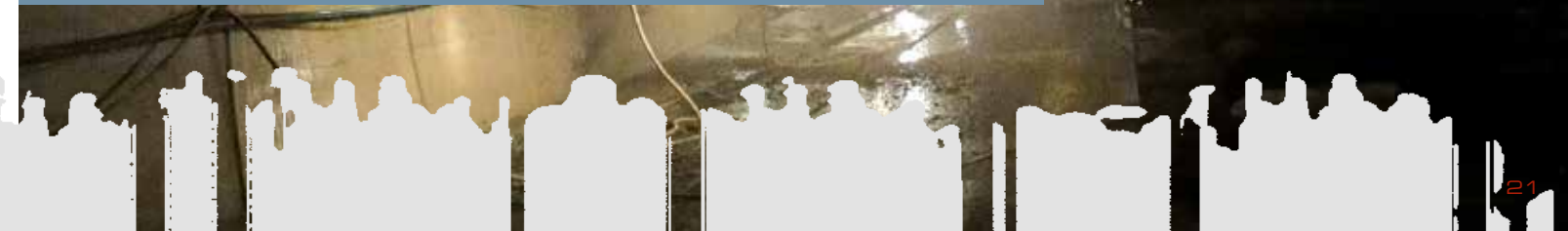
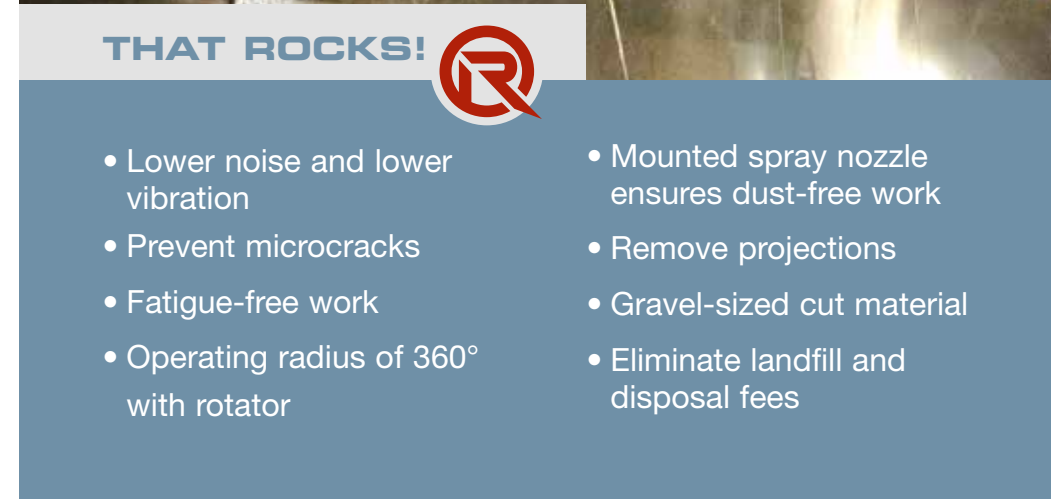


SPEARHEAD



THAT ROCKS!®

- Lower noise and lower vibration
- Prevent microcracks
- Fatigue-free work
- Operating radius of 360° with rotator
- Mounted spray nozzle ensures dust-free work
- Remove projections
- Gravel-sized cut material
- Eliminate landfill and disposal fees



ASPHALT®

Roadrunner –
Surely faster.

CUTTING IN ALL POSITIONS

Whether it is for horizontal or vertical work – Rockwheel patch planers are always cost-effective and high-performance attachments. Roadrunner heavy-duty units certainly make a compelling case for being selected to use on asphalt, rock, concrete and contaminated surfaces.

Their low vibration, perfectly straight alignment, and parallel cutting edges make them the ideal attachment for repairing surfaces, performing precise contouring work, and efficient milling.

When it comes to asphalt work, the Roadrunner combines all three usual steps. The perfectly straight and the adjustable cutting depth eliminate corrective cutting and imprecise breaking. Moreover, the gravel-sized milled material can be reused immediately, eliminating landfill and disposal fees.



THAT ROCKS!®

- Vertical and horizontal work
- Angled and overhead work
- Milling and contouring
- Continuously adjustable cutting depth of 0-120 cm
- Cutting depth ensures level milled surfaces
- Material can be immediately reused as backfill
- Eliminate landfill and disposal fees

ASPHALT®COWBOY





STEEL MILLS®

Stays cool.

**WORKING UNDER
EXTREME HEAT**

Rockwheel cutting units are perfect for the precise profiling of the interior surface of cauldrons or boilers at steel mills, removing both projections as well as residues. Cutting units are able to withstand the residual heat in cauldrons better than any other conventional attachments, and in contrast to hammers are able to precisely profile boilers without punching any holes into the boiler wall.


Every time oil, gas, or solid fuels such as coal, wood, or steel are burned, residues such as ash, soot, sludge, and slag are produced. These residues settle inside the boiler and need to be removed.



STEELWORKER

THAT ROCKS

- Precise profiling
- Does not punch holes into cauldron / boiler walls
- Able to cut hard material




LANDSCAPING®

Cutting force above ground.

QUICKLY STUMP GRINDING

There are two efficient solutions available:

Rockwheel with wood picks

Standard picks can be quickly replaced with wood picks. These wood picks are not only rugged, they are also unaffected by the rocks commonly found among roots.

Rockwheel with wood drums

Another option is using a wood cutting wheel, which features sharp blades that can grind roots and tree stumps in less time. Additionally, the fact that this wood cutting wheel has a large diameter guarantees an extremely high peripheral velocity.



FORESTRY AND TRAIL BUILDING

Their powerful performance makes cutting units indispensable when building and maintaining trails and roads for pedestrians and vehicles.

Clearing roots from the ground, cutting thick hedges, and building trails through thick underbrush are just some of the applications that these cutting units can tackle precisely, quickly and quiet.

LANDSCAPING AND EARTHWORK

Loosening compacted soil is one of the tasks that needs to be taken care of when creating new landscaping, and a Rockwheel C2 or G5 on a small excavator is a powerful and efficient way to take care of it.

Needless to say, using small excavators also comes with an additional benefit in that it prevents damage to the adjacent site. This means that preparing drains, lawns, walkways etc. could not be easier.

THAT ROCKS®

- It takes 15 minutes to replace standard picks with wood picks
- High peripheral velocity makes wood cutting wheel three times faster
- Wood cutting wheel with sharp blades
- Clear underbrush, roots, thick hedges
- Quickly loosen compacted soil
- Prepare drains and walkways



SOIL MIXING®

The Performance with Economy.

CUT THE COSTS WITH HOMOGENEOUS MIXING

Rockwheel soil mixers are used to compact and stabilize soil and to carry out environmental remediation work.

An optimal paddle arrangement guarantees the homogenous mixing of the substrate or of the substrate with an additive.

One of the many applications is treating contaminated material on-site in such a way that pollutants are reliably prevented from leaching. In fact, this can completely eliminate the need to dispose of material at hazardous waste landfills, thereby avoiding the high cost and complexity involved in doing so.

Our soil mixers can be used with compact excavators or carriers within a range of up to 125 metric tonnes. Optional equipment options include depth limiters, extensions, injectors, and adapter plates.



THAT ROCKS!®

- Homogeneous mixing
- Compacting and stabilizing
- Mixing contaminated material
- Eliminate disposal costs
- Eliminate hazardous waste landfill costs
- Various paddle sizes
- Can be equipped with injectors and depth limiter

360° WORK



Unlimited flexibility.

EXPAND YOUR OPTIONS

Rockwheel cutting units operate perfectly with a rotator. This slewing ring with infinite rotation is installed directly on the Rockwheel and performs high-precision cutting. Moreover, the fact that the cutting unit can be rotated in this way means that the operating radius is increased to 360°.

The rotator unit ensures that the rotary cutter will always assume the most effective position for its grinding work, significantly improving overall performance.

Cutting units with a rotator can be mounted on excavators with an operating weight of up to 50 metric tonnes.



THAT ROCKS!



- 360° operating radius
- Faster & heavy duty rotation
- Infinite, variable rotation
- Improves cutting performance in trench & tunnel construction
- Adapter plate makes it possible to do lateral clearing with the cutting unit turned



FREE DANCER

CUTTER BUCKET®

Two united.

COMBINING CUTTING AND EXCAVATION

Our cut and load bucket, in short term cutter bucket (CB), combines cutting and excavation.

The number of machine combinations that are proving to be invaluable at work sites because of their efficiency and cost-effectiveness is constantly increasing.

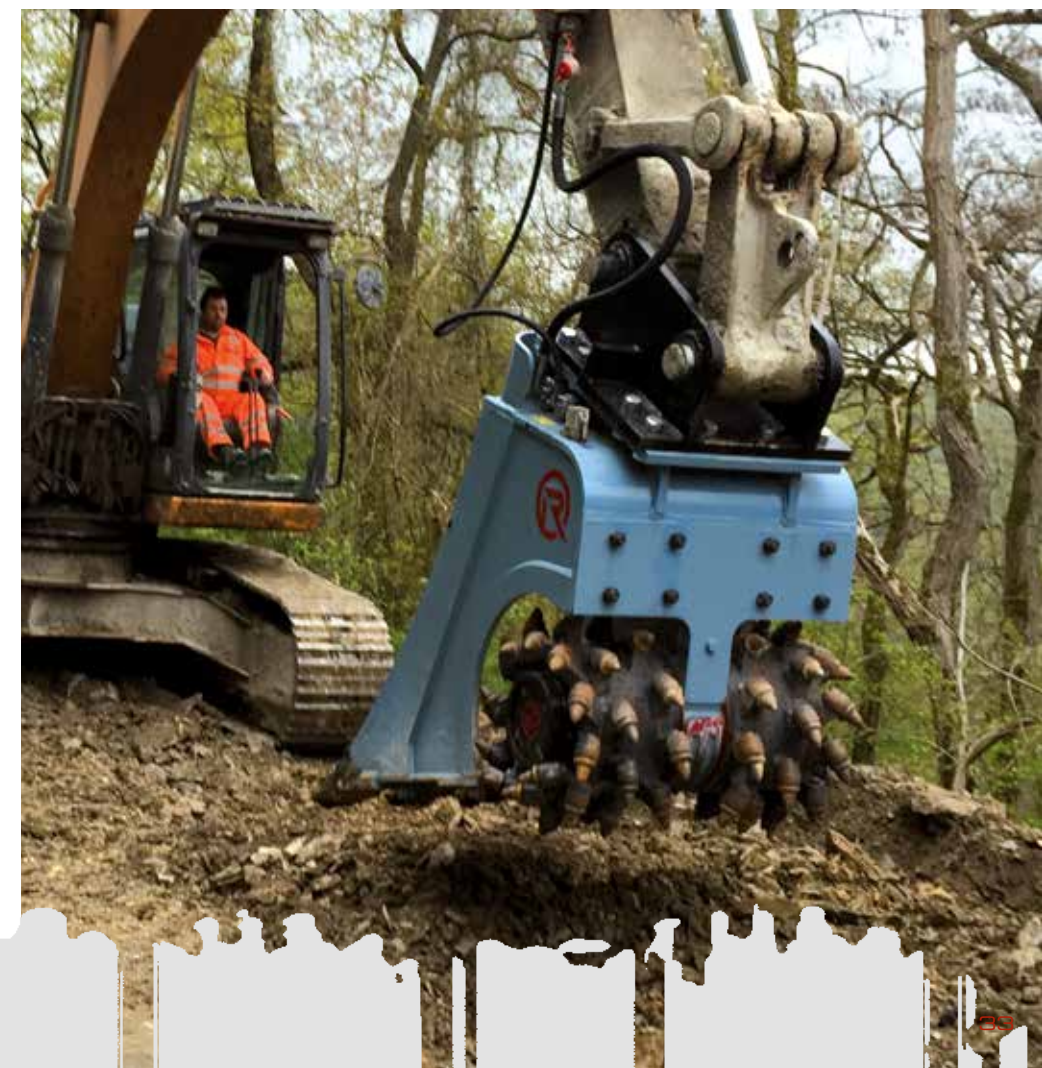
This particular combination is ideal for variable soil conditions, as it makes it possible to dig and cut when soft and medium soils are next to each other. Moreover, the gravel-sized excavated material can then be used as backfill.

In trench construction applications, precise cutting can result in up to 50% less excavation volume when compared to hammers, with the latter making it necessary to increasingly widen trenches as they get deeper. they are.



THAT ROCKS!®

- Eliminate constantly changing attachments
- Crushing excavation material on-site
- Mixing excavated material
- Reduce your machines removal and backfill costs

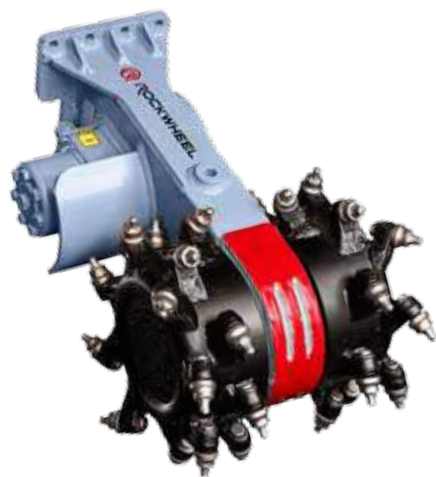


ALLROUND GENIUS



MAKE THE RIGHT CHOICE

We offer cutting units for machines with an operating weight of 1 to 125 tonnes. The number that comes after the model C (Chain), D (Direct) and G (Gearbox) refers to the average operating weight of the excavator.



THE LIGHTWEIGHT CHAMPION

C2

Rockwheel with chain drive

- Power: 9.5 kw
- Maintenance-free chain drive unit
- 66 kg - the lightest unit in the market
- Ideal for micro- and mini excavators from 1 to 3 t



THE BEST SOLUTION FOR COMPACT-EXCAVATORS

G5 / G5 TWIN

Rockwheel with gearbox drive

- Power: G5: 22 kW
G5 Twin: 44 kW
- Transmission with ratio for maximum torque
- Available with a second motor for double the power
- For excavators from 3 to 12 t

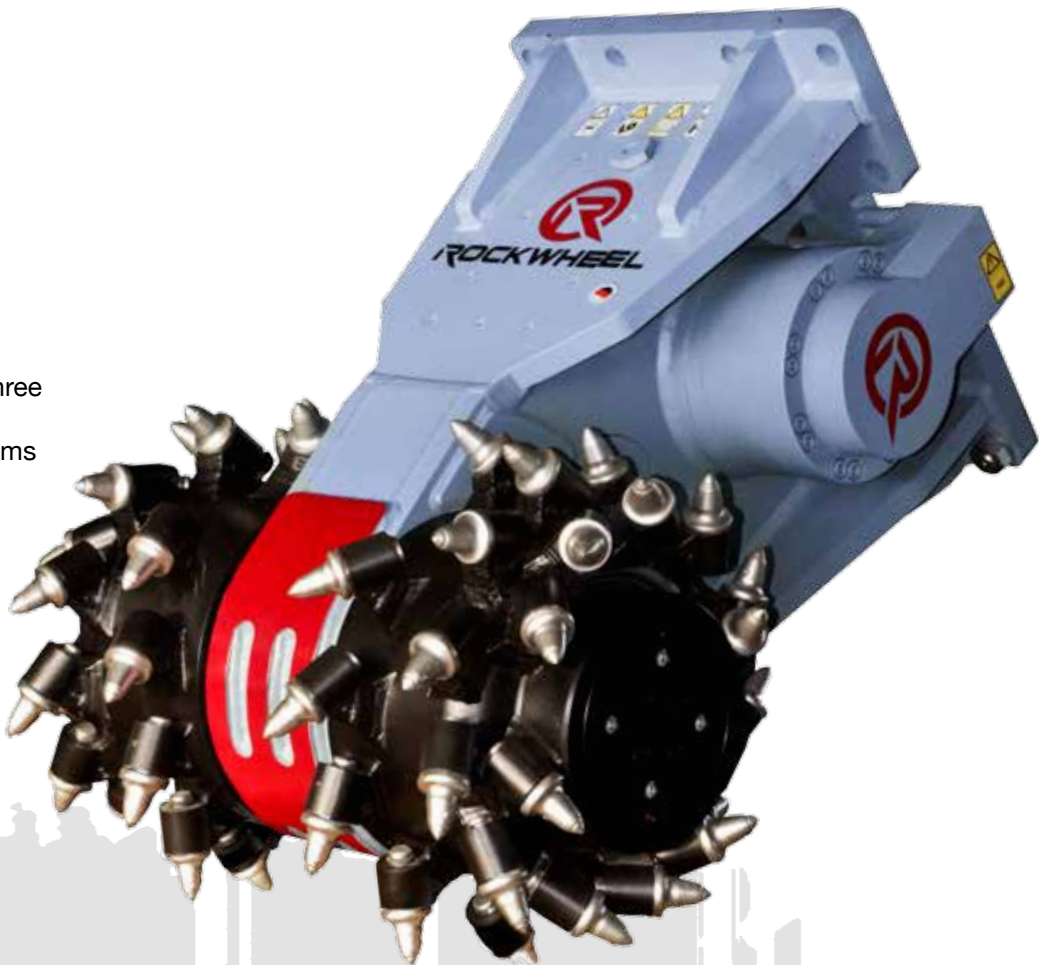


OPTIMUM VALUE FOR MONEY

**D10 / D15
D20 / D30**

Rockwheel with direct drive

- Power:
D10: 29 kW D15: 41 kW
D20: 70 kW D30: 110 kW
- Robust Technology with only three main components: housing, motor and cutting drums
- For excavators from 8 to 38 t



PURE POWER

**G40 / G50
G60/ G125**

Rockwheel with gearbox drive

- Power G40: 140 kW / G50: 140 kW
G60: 220 kW / G125: 400 kW
- Twin motor technology power and optimum weight distribution
- Solid and heavy-duty design for a long life
- For excavators from 40 to 125 tonnes



FIND EVEN MORE!

For every application the right tool. Ensuring that you always get the very best cutting performance.



VERTICAL MASTER
AX20 / AX30

- Rockwheel for holes**
- power: 70 / 110 kW
 - fast and precise
 - for excavators from 14 - 38 t



STRONG WITH STABILISATION
TC20 / TC30

- Rockwheel for fastest trenches**
- power: 70 / 110 kW
 - with stabilisation wheel
 - for excavators from 14 - 38 t



CUT & LOAD
CB20 / CB30

- Rockwheel with direct drive in a bucket**
- power: 70 / 110 kW
 - cut, crush, mix and load
 - small gravels
 - for excavators from 14 - 38 t

PATCH PLANER

RR200
RR300
RR400

- Profiling and Cutting**
- power: 18 / 30 / 40 kW
 - cutting depths from 0 to 120 cm stepless adjustment
 - for excavators from 13 - 18t



SUPERIOR ENGINEERING®

Even hard facts and figures can be impressive.
See for yourself!



S.A. TRAMAC BENELUX N.V.

Avenue de l'Energie 11, B - 4432 Alleur
Tel.: +32 4 263 99 84 Fax: +32 4 263 99 85
Mail: tramac@tramac.be www.tramac.be

THE FACTS AND FIGURES

ROCKWHEEL CUTTING UNITS

Type		C2	G5	G5 twin	D10	D15	D20	D30	G40	G50	G60	G125
Excavator size	t	0.7 - 2.5	2,5 - 6	5 - 10	8 - 12	13 - 20	17 - 28	25 - 42	30 - 50	42 - 50	50 - 65	65 - 125
Hydraulic power	kW	9.5	22	44	29	41	70	110	140	140	220	400
Operating weight	kg	66	181	200	426	595	1.170	1.444	1.662	2.458	2.478	5.420
Maximum pressure	bar	225	400	400	400	400	400	400	400	400	400	400
Working pressure	bar	50 - 225	180 - 400	180 - 400	180 - 400	180 - 400	180 - 400	180 - 400	180 - 400	180 - 400	180 - 400	180 - 400
Max. oil flow	l/min	60	65	100	112.5	132	320	460	540	540	680	1000
Optimum oil flow	l/min	30	40	80	60	120	220	320	360	360	540	800
Reduction ratio		1:1	2:1	2:1	1:1	1:1	1:1	1:1	1.3:1	1.2 : 1	1.2 : 1	1.2 : 1
Drum speed	rpm @l/min	98 @30	50 @40	95 @80	80 @60	96 @120	78 @220	76 @320	49,6 @360	52 @360	64 @540	40 @1.000
Pick speed	m/s @l/m	1,39 @30	0,89 @40	1,7 @80	1,8 @60	2,4 @120	2,2 @220	2,7 @320	1,8 @360	2,1 @360	2,4 @540	1,9 @1.000
Cutter torque	Nm @bar	1095 @225	4429 @350	4696 @350	4173 @350	6945 @350	14272 @350	23362 @350	40325 @350	37.833 @350	46900 @350	137160 @350
Pick force	kN @bar	8 @225	26 @350	29 @350	19 @350	29 @350	48 @350	69 @350	118 @350	104 @350	129 @350	296 @350
Number of picks	No.	32	32	32	56	64	64	60	54	54	54	76
Size of pick holder	mm	14	19	19	19	19	25.4	38 / 30	38 / 30	38 / 30	38 / 30	38 / 30
Drum diameter	mm	270	340	340	423	475	646	677	684	726	726	925
Drum width	mm	300	405	405	743	832	1058	1156	835	1050	1050	1494
Drum spacing	mm	60	82	82	103	118	143	143	202	250	250	339
Cutter length	mm	509	618	618	798	937	1155	1170	943	1356	1350	1686
Dimensions of adapter plate	mm	256 x 160	318 x 220	318 x 220	560 x 410	650 x 495	700 x 650	700 x 650	700 x 650	800 x 650	800 x 650	1035 x 1065



ROCKWHEEL AXIAL CUTTERS

Type		TC20	TC30	AX20	AX30
Operating weight	kg	962	1.173	885	968
Number of picks	No.	32	30	32	30
Size of pick holder	mm	25,4	38/30	25,4	38/30
Drum diameter	mm	650	680	646	678
Cutter length	mm	1.000	1.030	1.340	1.382
Dimensions of adapter plate	mm	650 x 495	650 x 495	650 x 700	650 x 700

ROCKWHEEL CUTTER BUCKET

Type		CB20	CB30
Operating weight	kg	1.838	1.968
Number of picks	No.	64	60
Drum diameter	mm	650	680
Cutter length	mm	1.000	1.030

ROCKWHEEL PATCH PLANERS

Type		Roadrunner 200	Roadrunner 300	Roadrunner 400
Excavator size	t	1 - 3,5	5 - 8	8 - 14
Hydraulic power	kW	18	30	40
Operating weight	kg	140	450	600
Working pressure	bar	180-400	180 - 210	180 - 210
Optimum oil flow	l/min	30 - 40	60 - 80	100 - 125
Cutting distance from kerb	mm	50	50	50
Cutting line spacing	mm	8	10	10
Drum speed	rpm	75 - 101	150 - 200	130 - 170
Number of picks	No.	36	43	58
Cutting depth	mm	10 - 20	0 - 120	0 - 120
Drum width	mm	170	300	400


TRAMAC

S.A. TRAMAC BENELUX N.V.
 Avenue de l'Energie 11, B - 4432 Alleur
 Tel.: +32 4 263 99 84 Fax: +32 4 263 99 85
 Mail: tramac@tramac.be www.tramac.be



DRUMS AND PICKS

For each application.

ADDITIONAL OPTIONS

Better equipment.



WITH HELIX

Demolition



WITHOUT HELIX

excavation and other works



MORE PICKS

Profiling



WOOD DRUM

tree stumps



WITH PADDELS

soil mixing



STANDARD-PICKS

soft up to medium material



MEDIUM DUTY, HEAVY-DUTY AND SUPER DUTY PICKS

medium up to hard material



HARD FACING PICKS

abrasive material



WOOD PICKS

stump grinding

RIPPER-TOOTH

Especially for working in narrow trenches is the ROCKWHEEL RIPPER TOOTH



WATER SPRAY BAR

The dust can be easily controlled by rockwheel WATER SPRAY BAR.



ROTATION UNIT

You will get 360° working radius especially for sensible areas and tunnels.



MULTI ADAPTER-BRACKET

One adapter bracket for multiple machines.



A RELIABLE PARTNER EVERY TIME

SERVICE

We offer a comprehensive service for your cutting unit together with our Rockwheel partners. From maintenance to repair and fast delivery of spare parts – you'll get the full package from us.

HIRE EQUIPMENT

Our entire product range is also available to hire. Worldwide. All our cutters for hire are kept in tip-top quality.

FINANCING SERVICE

Together we'll find the right financing solution to meet your needs, either with our financing partners or with your own bank. Whether leasing, sale-leaseback or hire-purchase – take advantage of the solution right for you.



info@rockwheel.com
www.rockwheel.com



S.A. **TRAMAC BENELUX** N.V.

Avenue de l'Energie 11, B - 4432 Alleur

Tel.: +32 4 263 99 84 Fax: +32 4 263 99 85

Mail: tramac@tramac.be www.tramac.be